

SMART VFD CONTROL PANEL



**Floating VFD ,
Multi VFD,
Control Panel**



**Highline Technical
Distributions LLP**

Email : info@highlinetech.in

www.highlinetech.in

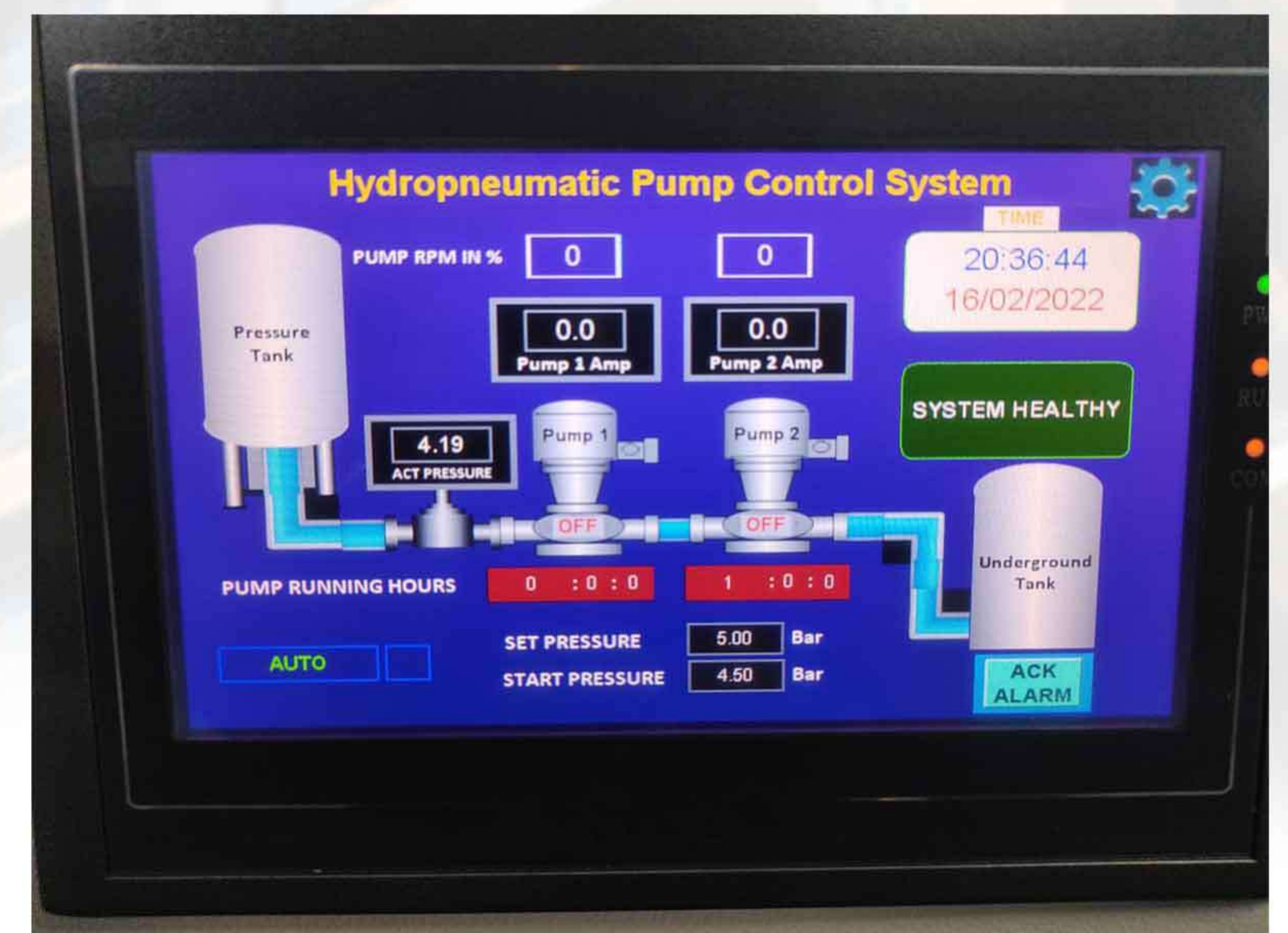
Mobile - +91-99252 47574



SMART VFD CONTROL PANEL

KEY FEATURES

- 7" HMI Touch Screen Display
- Touch to wake Graphical Display
- Individual/ Single VFD for all pumps
- Digital Setting of Cut in & Cut out pressure
- Dry Run, Over/under voltage protection,
- Overcurrent & Undercurrent Protection.
- Real Time Based Operation
- Soft Start
- Fault Display & Alarm Buzzer
- Cascade Operation
- Compatible upto 5 pumps
- Password Protection
- IP55 rating
- Show pump running hours
- Individual MCB for Each
- BYPASS facility
- Auto/ Manual/ OFF selector Switch
- Energy Saving upto 30%



**Highline Technical
Distributions LLP**

Email : info@highlinetech.in

www.highlinetech.in

Mobile - +91-99252 47574



SMART VFD CONTROL PANEL

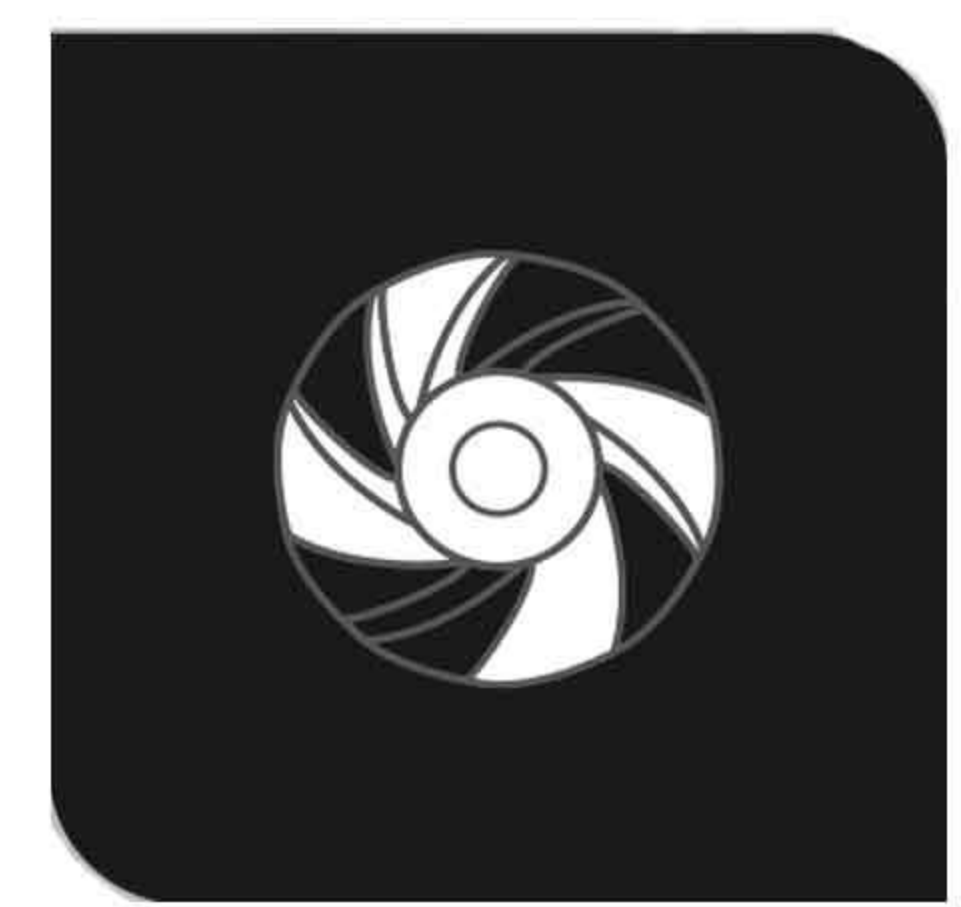
THE FEATURES AND ADVANTAGES OF VFD CONTROL PANEL



**Constant Water
Pressure**



Mute Operation



Durable



**Simple to operate,
no need of professionals
help.**



Multiple Protections



**Advanced Environment
Service**



**Energy Saving &
Enviornmental Protection**



**Highline Technical
Distributions LLP**

Email : info@highlinetech.in

www.highlinetech.in

Mobile - +91-99252 47574